

TEMPORARY TRAFFIC CONTROL Pocket Reference Guide (PRG4A)



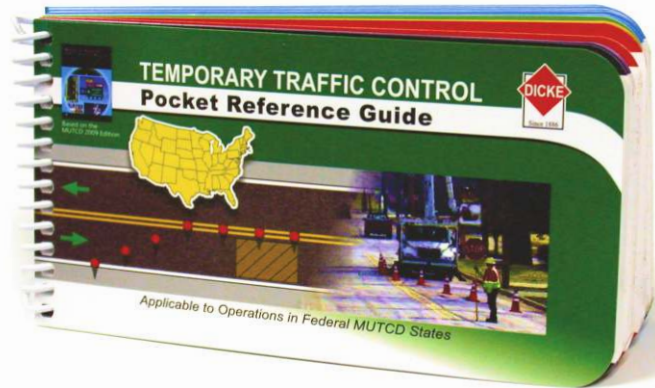
Help protect workers from construction work zone hazards.

With continual traffic congestion, frustrated drivers, and deteriorating infrastructure, roadway work zone accidents have soared to an all-time high. **There are solutions** - insure that the right information is communicated and made available to each roadway worker exposed to danger. Positively guide motorists through work zones with proper equipment and placement and bring work zones into compliance with Federal and State DOT requirements and OSHA standards.

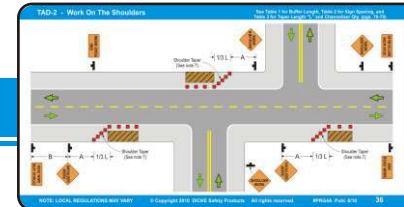
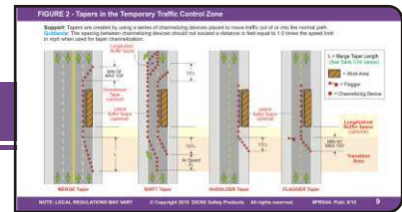
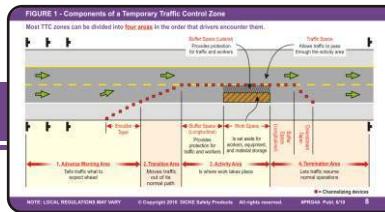
**BASED ON THE
2009
MUTCD**

Economical Job Aid for Technicians

- Based on the current Federal MUTCD.
- 80 thick, laminated, "field durable" pages.
- Quick reference charts and tables.
- Quick reference typical work zone drawings.
- Easy to use and easy application to roadways.
- Compact 7" x 3-5/8" size.

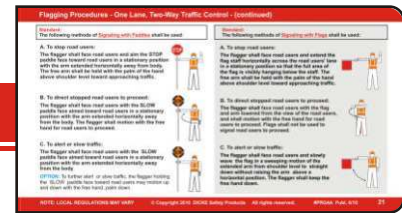


Work Zone Components and Definitions



Typical Application Diagrams

Equipment and Procedures



Speed - mph	Stopping Distance - ft	Clearance - ft
20	115	6
25	155	7
30	205	7
35	260	8
40	305	8
45	360	9
50	425	9
55	495	10
60	570	10
65	645	10
70	730	11
75	820	11

Road Type	Distance Between Signs		
	A	B	C
Urban (Low speed)	100'		
Urban (High speed)	350'		
Rural	500'		
Expressway-Freeway	1,000'	1,500'	2,640'

Speed (mph)	Merge Taper - "L"	Shift Taper - "1/2 L"	Shoulder Taper - "1/2 L"	Min. Taper Length (ft)	Channelizer Quantity Index
20	120	60	60	60	100
25	150	75	75	75	125
30	180	90	90	90	150
35	210	105	105	105	175
40	240	120	120	120	200
45	270	135	135	135	225
50	300	150	150	150	250
55	330	165	165	165	275
60	360	180	180	180	300
65	390	195	195	195	325
70	420	210	210	210	350
75	450	225	225	225	375
80	480	240	240	240	400
85	510	255	255	255	425
90	540	270	270	270	450
95	570	285	285	285	475
100	600	300	300	300	500

Tables and Indexes



DICKE SAFETY PRODUCTS

www.dicketool.com

Illinois - 1201 Warren Avenue • Downers Grove, IL 60515 • Ph: 630.969.0050 • Fax: 630.969.3973
 Oregon - 1845 Anunsen Street, N.E. • Salem, OR 97301 • Ph: 800.333.5641 • Fax: 503.364.0340